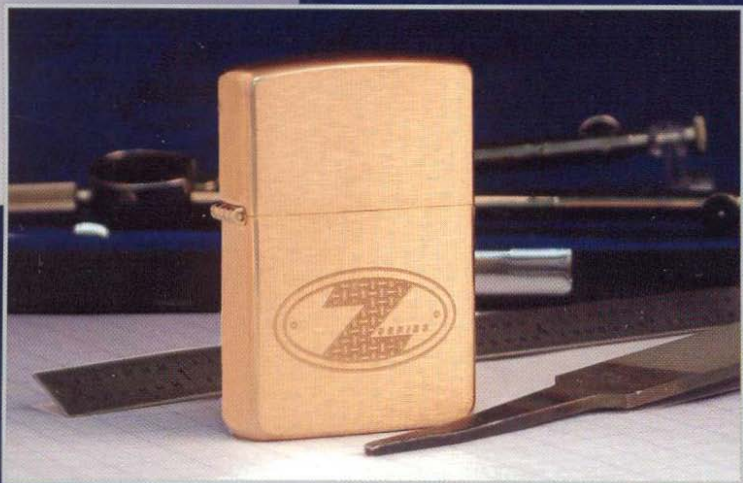


zippo®



COPPER PROJECT

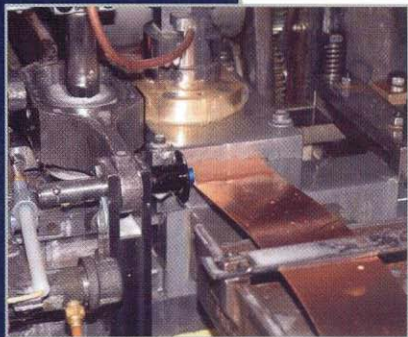


It starts with a concept of a Zippo lighter crafted from innovative materials and manufactured with state-of-the-art processes. Collectors and specialty customers want Zippo lighters that are unlike any previous models. Other times, advancements in the manufacturing realm make it possible to fabricate lighters from materials that had previously been overlooked.

The Z-Series is the debut of these exciting new concept lighters. When experimenting with a new material or process, a run of lighters is produced to determine the manufacturing steps necessary to make a quality product worthy of the Zippo name. These prototypes are the first lighters off the line and are only made once. A special Z-Series bottom stamp identifies these pre-production, limited-run, Zippo lighters. After all manufacturing steps have been refined, that Zippo lighter either becomes a production run item with the standard bottom stamping or it is dropped from the line. In most instances, the pre-production runs of Zippo lighters are not available to the public . . . until now.

29
Cu

Copper has been found among the remains of numerous ancient civilizations including Egypt, China, and Cyprus (from which the name copper is derived). Copper is most likely the first metal from which useful objects were made.



The first offering of the Z-Series pre-production run available for purchase is the Copper Project. As opposed to the standard brass case that is a 70/30 copper and zinc alloy, these unique pieces are 99.9% pure copper.



Softer and more fragile than the brass case, the solid copper cases need a more delicate manufacturing process that requires more hand work. The difficulties with deep drawing copper, resistance welding the hinge, and

protecting the finish are major obstacles to overcome.

Therefore, similar to other specialty and precious metal cases, like solid gold and sterling silver, the case is fabricated on traditional press and die machines. Once the case has been formed, trimming of the lid and bottom, and stamping are done as a secondary operation. After the case fabrication is complete, the Z-Series logo is engraved using the Frosted Etch engraving process. The consecutive numbering is laser engraved opposite the hinge side on "side 5". The finished cases are flash plated with a copper colored gold solution to inhibit tarnishing.

29

Cu

Copper, atomic symbol Cu, is a brownish-red metallic element that has a wide variety of uses. Its wide range of uses is due to its advantageous properties like its conductivity of electricity and heat, resistance to corrosion, malleability, ductility, and beauty.

The limited edition Copper Project lighters will be allocated to "Official Z-Series Retailers" in the Americas, European, and Asian/Pacific Rim countries. Each lighter will have a unique laser mark indicating a region, along with the consecutive number. The letters "A", "E", and "AP" will be indicated on the lighters allocated to the Americas, European, and Asia/Pacific Rim regions respectively. An additional allowance of 100 lighters marked with the "ZC" designation is offered to Zippo Click Members.

Each lighter is packaged in a handsome clear dome self-display unit. Housed inside the case is the scroll of authenticity that attests to the genuineness of each piece. The Z-Series Copper Project lighters are made to the same quality standards as every Zippo lighter. For serious and casual collectors alike, these beautiful prototypes are sure to be a highlight of any collection.

29
Cu

Copper sulfide, an ore that contains less than 12% copper is first crushed and concentrated by a process called "flotation".

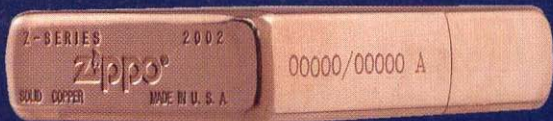


The concentrates are then smelted in a furnace, yielding a crude metallic copper with a purity of 98%. Electrolysis purifies the copper even further to bear copper bars of 99.9% purity.

Z-Series bottom stamp identifies these pre-production, limited-run Zippo lighters.



"Side 5" features a unique laser mark indicating a region, along with the consecutive number.



A predetermined percentage of Z-Series Copper project were allotted to the three regions and Zippo Click collectors club. Those percentages yield the following allocation figures:

10188 - The Americas

7507 - Asia and Pacific Rim

3646 - Europe

100 - Zippo Click

Watch for the Armor Project, second in the Z-Series of collectible, limited edition lighters. Fifty percent thicker than a standard Zippo lighter case, these heavy-walled lighters will carry a special Z-Series Armor bottom stamp. Limited quantities of these prototypes will be produced and allocated worldwide.

Are you in the Click?

zippo
CLICK

zippoclick.com

Those individuals who were assigned work on the
Copper Project are as follows:

Wendy Arnett - Buffing

Steve Hughes - Engineering

Ray Miller - Tool Design

Steve Colley - Case fabrication

Keith Hoover - Industrial Engineering

Bev Hull - Sales

Bucky Clark - finishing

Paul Smithmyer - Process Development

Tom Morlock - Quality

Tom Hughes - Tool Shop

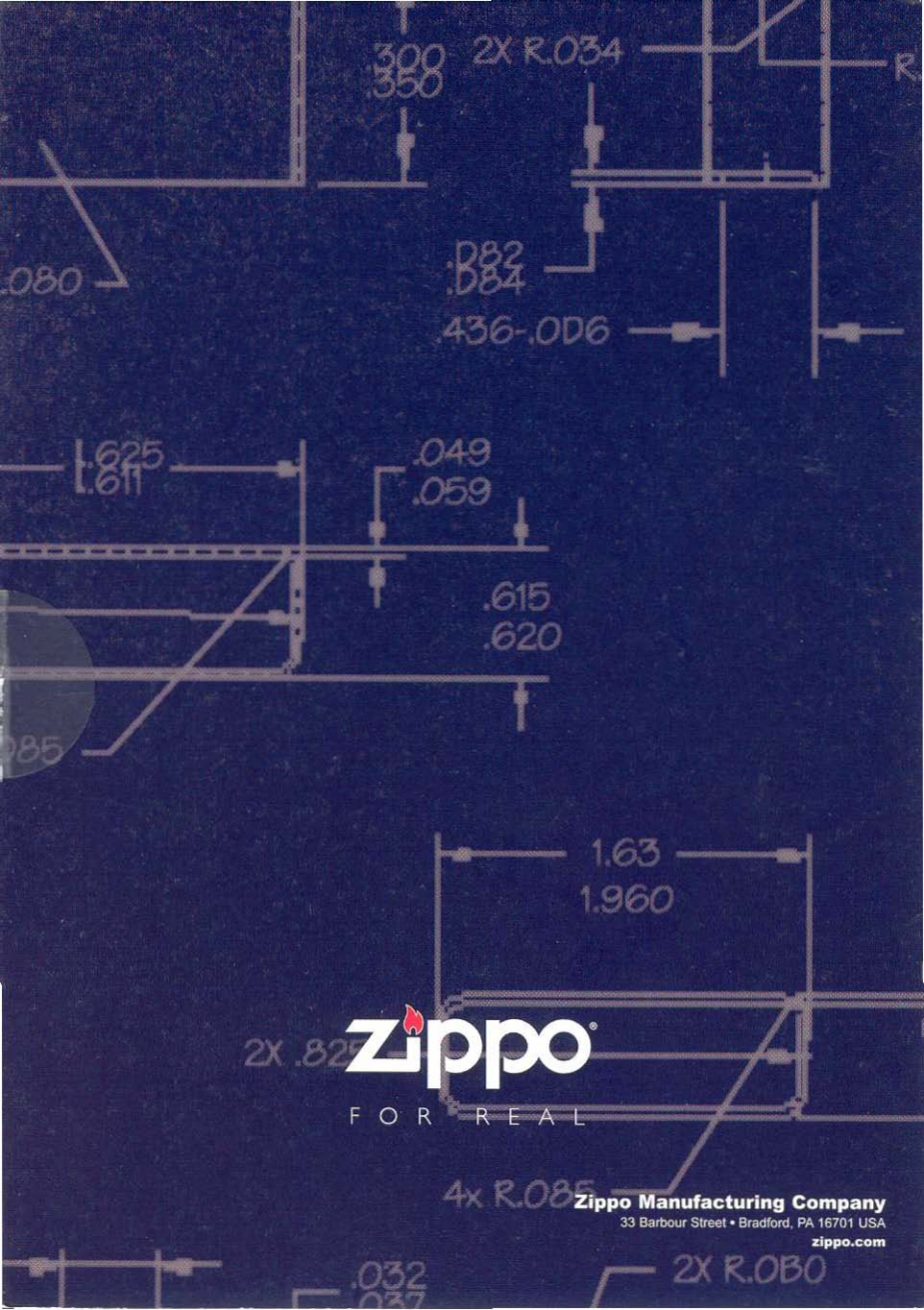
Mike Johnson - Engineering

Scott Bryant - Process Development

Neil Wolcott - Case fabrication

Denny Roesch - Case fabrication

Mike Pfeil - Engineering/Project Manager



2X .825 **zippo**
FOR REAL

Zippo Manufacturing Company

33 Barbour Street • Bradford, PA 16701 USA

zippo.com